

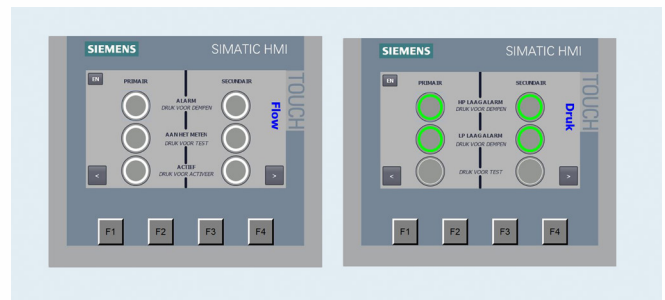
Flow - Pressure Alarm Module

Introduction

The Securro Flow - Pressure Alarm Module is a unit with 2 inputs to monitor the breathing gas flow in the primary and secondary supply, and 4 inputs to monitor 2 high pressure and 2 low pressure supplies.

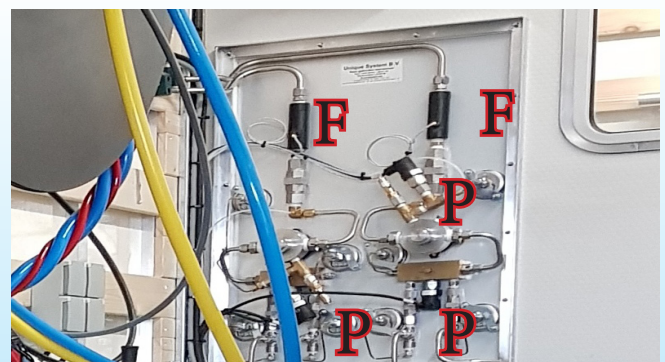
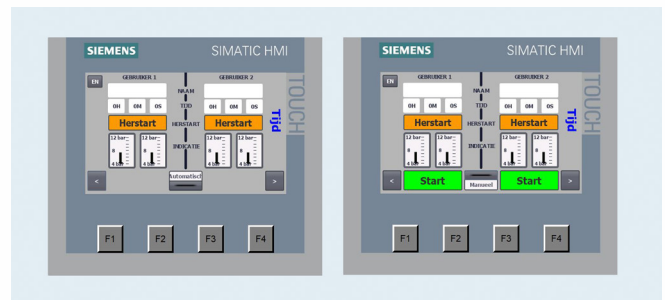
The indications on the panel are:

- Flow
- Supply active
- Time registration divers
- Flow alarm
- Pressure alarm
- Function test



Specifications

- Partnumber SE-op04-SES.510
- Power requirements 24 VDC, 0.8 A
- Power consumption 800 mA
- Housing standard 19" rack mounted
- Weight 2,000 gram
- Operating temperature -10 to +50 °C
- Compliance RoHS
- Flow sensor (F) 2x
- Pressure sensor (P) 4x 5 and 20 bar



For more information, please contact Mr. R. de Jong (managing director Securro)

rwdjong@securro.com

www.securro.com

0031 (0)6 109 11 333