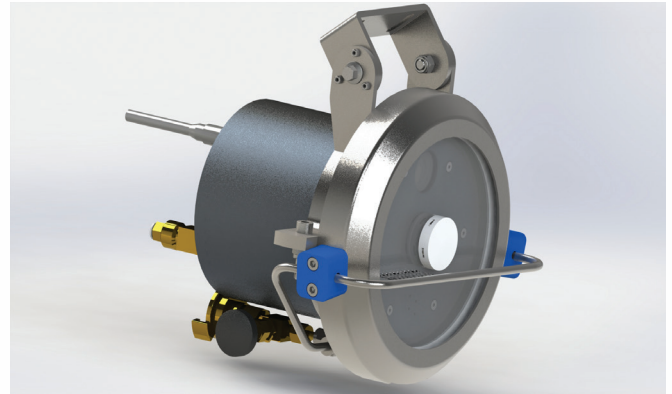


## Glass Crank Camera

### Introduction

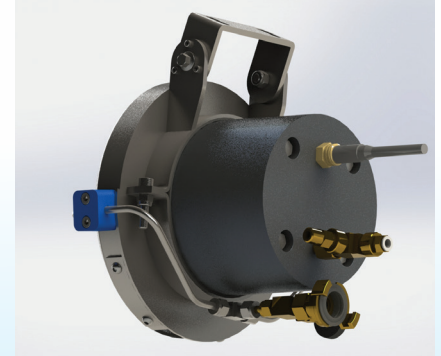
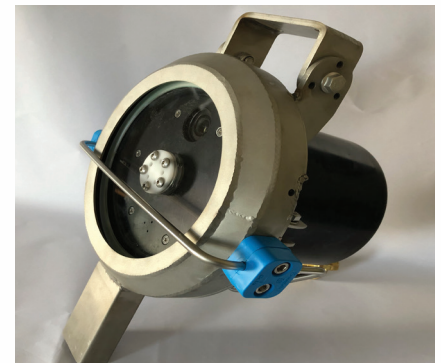
The Securro Glass Crank Camera is a high quality camera system in a water-tight housing which can be used in polluted situations, such as mud, sand, clay, turbid water, etc.

The double anti-reflection window is constantly cleaned with water via a smart rotating spraying system which results in good video quality under almost all contaminated conditions.



### Specifications

- Partnumber SE-op10-SES
- Housing Stainless steel hood with anodised aluminum
- Housing resistant up to 5 bar overpressure  
up to 10 bar waterjet  
immersion for maximum 10 minutes
- Window Double anti reflection 170 mm diameter
- Image sensor Fixed iris 1/2.8" effective progressive scan  
RGB CMOS
- Resolution Max. 1920x1200/1080
- Horizontal angle of view 113 °
- Vertical angle of view 62°
- Minimum illumination Color: 0.3 lux
- Operating Temperature -10 - +40 °C
- IP value IP69
- Power 24 VDC 1.5 A
- Required water amount ± 1 liter / min
- Dimensions 275 x 270 x 180 mm (l x w x h)
- Weight 7 kg



### Additional

The Securro Glass Crank Camera can be further extended with recording units, monitors etc. etc. on customer demands.

For more information, please contact Mr. R. de Jong (managing director Securro)

[rwdjong@securro.com](mailto:rwdjong@securro.com)

[www.securro.com](http://www.securro.com)

0031 (0)6 109 11 333