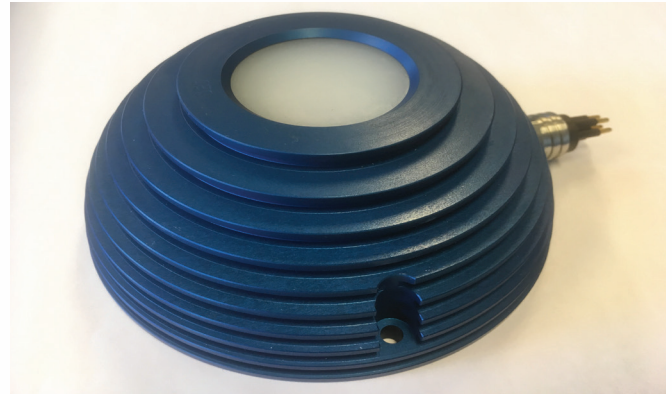


## RGBW LED Light

### Introduction

The Seccurro RGBW LED Light is a high quality light system in a water-tight housing which can be used in Decompression chambers, Wet Bells, Dive cages, Swimming pools, etc.

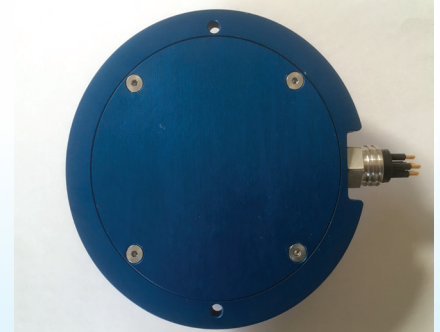
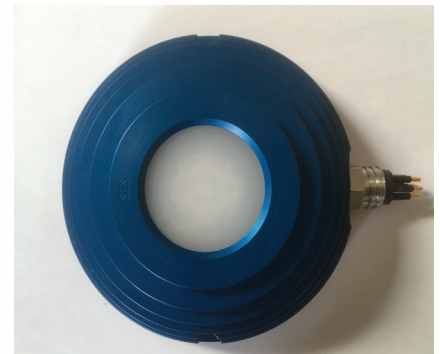
The RGBW LED light is controlled via a DMX controller. The colour and light intensity can be altered over a wide range.



### Specifications

- Partnumber SE-op09-SES
- Housing standard\* Anodised aluminum
- LED power 40 W
- Power requirements 24 VDC, 2.8 A
- Power consumption 2,800 mA max
- Colour temperature 6,500 °K
- Light intensity 100+270+440+620 Lumen
- Operating temperature -10 to +50 °C
- Operating life 50,000 Hours
- Depth rate 150 msw
- Height 52 mm
- Diameter 140 mm
- Weight 1,110 gram
- Compliance RoHS

\* = Optional housing in Seawater resistant RVS 316L



For more information, please contact Mr. R. de Jong (managing director Seccurro)

[rwdjong@seccurro.com](mailto:rwdjong@seccurro.com)

[www.seccurro.com](http://www.seccurro.com)

0031 (0)6 109 11 333