

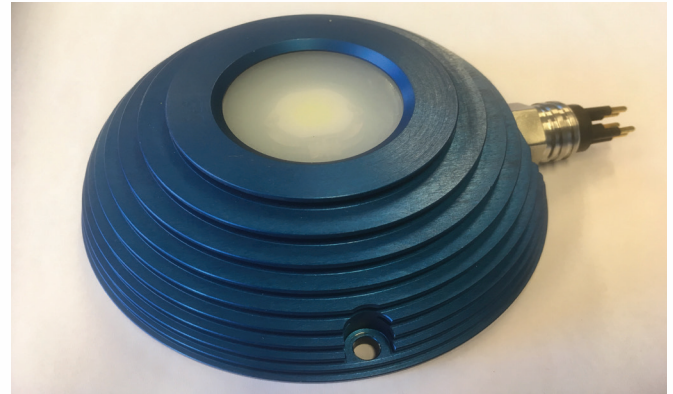
Working LED Light

Introduction

The Seccurro Working LED Light is a high quality light system in a water-tight housing which can be used in decompression chambers, Wet Bells, Dive cages, Swimming pools, etc.

The Working LED light is dimmable in two ways:

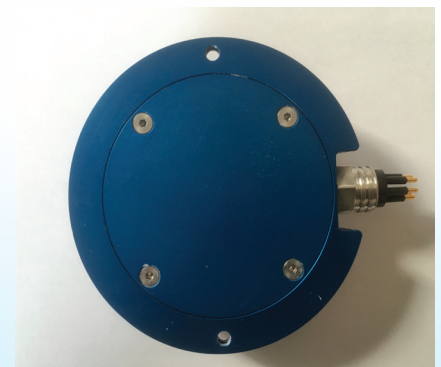
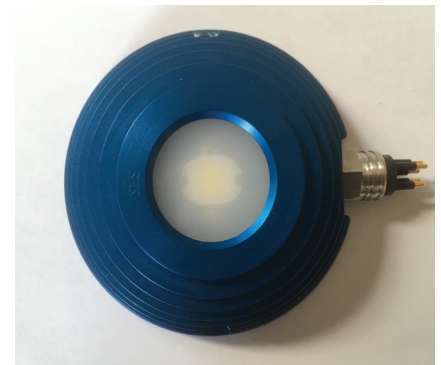
- with 2 external switches (not part of delivery)
- with analog signal (0-10 VDC)



Specifications

- Partnumber SE-op08-SES
- Housing standard* Anodised aluminum
- LED power 10 W
- Power requirements 24 VDC, 0.8 A
- Power consumption 800 mA
- Colour temperature 6,000 ± 500 °K
- Light intensity 1,000-1,200 Lumen
- Beam angle > 70 °
- Dimmable (with switches) 10 steps
- Dimmable (analog) 0 - 100%
- Operating temperature -10 to +50 °C
- Operating life 50,000 Hours
- Depth rate 150 msw
- Height 42 mm
- Diameter 120 mm
- Weight 655 gram
- Compliance RoHS

* = Optional housing in Seawater resistant RVS 316L



The benefit of the Seccurro Working LED Light, in addition to other Working LED lights, is the automatic dimming function. A protection circuit prevents overheating by reducing the power to the Working LED light.

For more information, please contact Mr. R. de Jong (managing director Seccurro)

rwdjong@seccurro.com

www.seccurro.com

0031 (0)6 109 11 333